

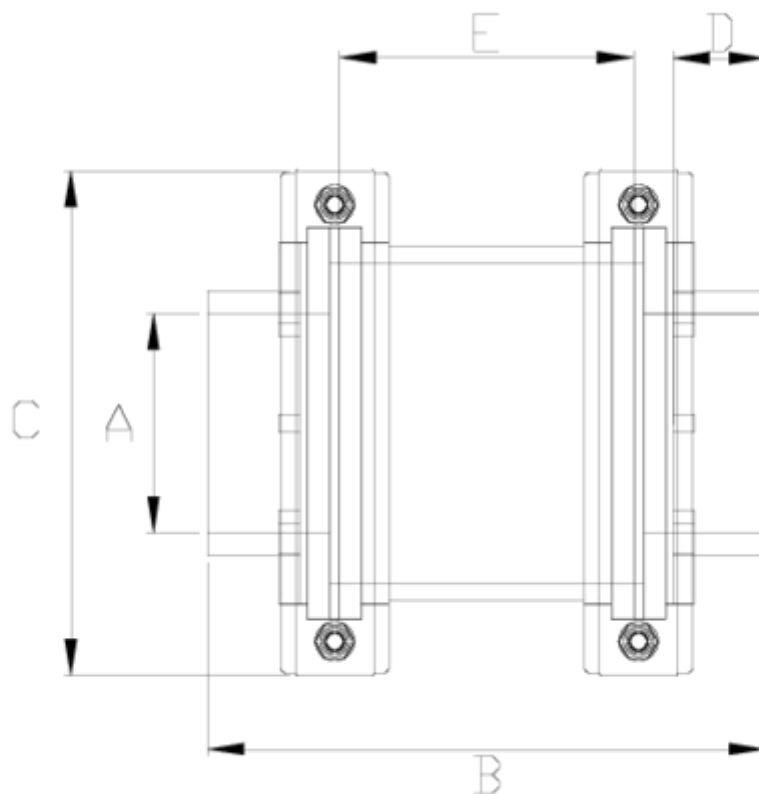


## Netvitc System®

# Fluid display, solvent socket outlet ITEM 088

Ref.	Description	Net Weight	Vol. (m <sup>3</sup> )	Gross Weight	Units Box
1018004	FLUID DISPLAY SOLV. SOCKET 40	0.738	0.03129	7.95	10
1018005	FLUID DISPLAY SOLV. SOCKET 50	0.789	0.03129	8.47	10
1018006	FLUID DISPLAY SOLV. SOCKET 63	0.750	0.03129	8.08	10
1018007	FLUID DISPLAY SOLV. SOCKET 75	0.931	0.03682	9.86	10
1018008	FLUID DISPLAY SOLV. SOCKET 90	2.820	0.04117	11.92	4
1018009	FLUID DISPLAY SOLV. SOCKET 110	2.985	0.04117	12.58	4
1018010	FLUID DISPLAY SOLV. SOCKET 125	3.049	0.02244	6.59	2
1018011	FLUID DISPLAY SOLV. SOCKET 140	5.300	0.04836	11.27	2
1018012	FLUID DISPLAY SOLV. SOCKET 160	5.540	0.04460	11.84	2
1018014	FLUID DISPLAY SOLV. SOCKET 200	9.170	0.04836	9.90	1
1018015	FLUID DISPLAY SOLV. SOCKET 225	10.481	0.06149	11.40	1





## ITEM 088 | Fluid display, solvent socket outlet

PESO (g)	CÓDIGO	A	BRIDA	B	C	D	E	PN	MEDIDA
730	18004	40	63	172	125	28	70	PN10	MÉTRICO
786	18005	50	63	176	125	31	70	PN10	MÉTRICO
738	18006	63	63	150	125	36	70	PN10	MÉTRICO
920	18007	75	63	200	125	42	70	PN10	MÉTRICO
2600	18008	90	125	240	203	52	122	PN10	MÉTRICO
2740	18009	110	125	256	203	62	122	PN10	MÉTRICO
2800	18010	125	125	284	203	70	122	PN10	MÉTRICO
4710	18011	140	160	297	251	75	137	PN10	MÉTRICO
5034	18012	160	160	317	251	86	137	PN10	MÉTRICO
8895	18014	200	200	446	297	106	210	PN10	MÉTRICO

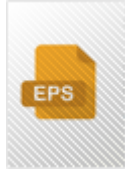


## ITEM 088 | Fluid display, solvent socket outlet

9955 18015 225 200 532 297 120 210 **PN10** MÉTRICO



## PRODUCT DOCUMENTS



## PRODUCT CERTIFICATES

## COMPANY CERTIFICATES

