

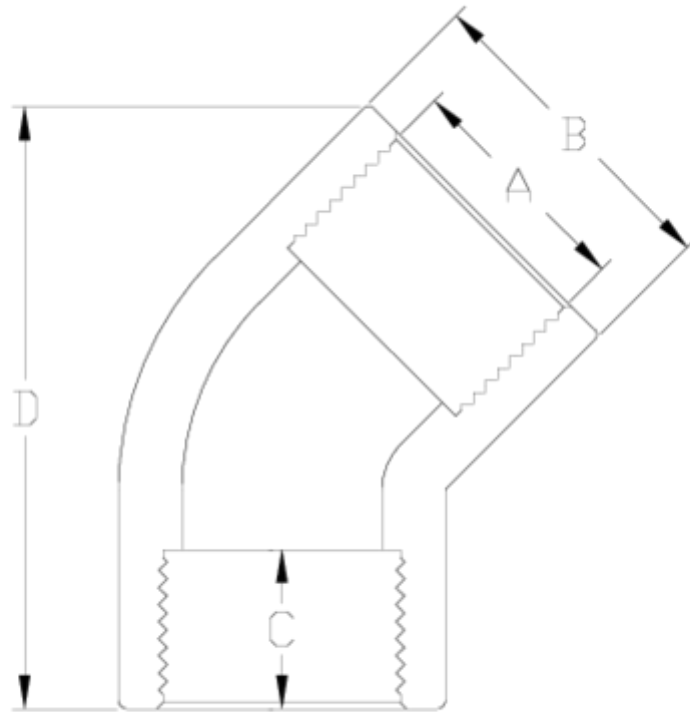


PVC pressure fittings

F/F threaded 45° elbow ITEM 008

Ref.	Description	Net W.	Vol. (m ³)	Gross W.	Batch
1002311	CODO 45° ROSCA H-H 1/2"-1/2"	0.018	0.00473	1.90	100
1002312	CODO 45° ROSCA H-H 3/4"-3/4"	0.028	0.00892	2.99	100
1002313	CODO 45° ROSCA H-H 1"-1"	0.054	0.01553	5.71	100
1002314	CODO 45° ROSCA H-H 1 1/4"-1 1/4"	0.095	0.03129	10.97	110
1002315	CODO 45° ROSCA H-H 1 1/2"- 1 1/2"	0.145	0.04717	16.64	110
1002316	CODO 45° ROSCA H-H 2"-2"	0.275	0.04717	15.76	55
1002317	CODO 45° ROSCA H-H 2 1/2"-2 1/2"	0.392	0.04117	13.66	33
1002318	CODO 45° ROSCA H-H 3"-3"	0.678	0.04117	11.54	16





ITEM 008 | F/F threaded 45° elbow

Código	A	Peso (g)	B	C	D	PN	ROSCA
02311	1/2"	20	27	16	48	PN10	BSP
02312	3/4"	27	33	17	53	PN10	BSP
02313	1"	54	41	21	63	PN10	BSP
02314	1 1/4"	80	50	23	80	PN10	BSP
02315	1 1/2"	156	61	24	95	PN10	BSP
02316	2"	260	76	28	125	PN10	BSP
02317	2 1/2"	361	89	32	137	PN10	BSP
02318	3"	676	107	35	162	PN10	BSP



PRODUCT DOCUMENTS



PRODUCT CERTIFICATES



COMPANY CERTIFICATES

