

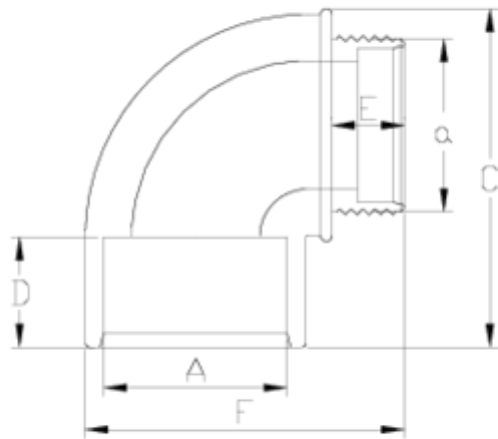


## PVC pressure fittings

### Plain M/T 90° elbow ITEM 003

Ref.	Description	Net Weight	Vol. (m <sup>3</sup> )	Gross Weight	Units Box
1002606	90° ELBOW PLAIN/M. THREAD 63-2"	0.254	0.04880	13.30	50
1002605	90° ELBOW PLAIN/M. THREAD 50-1 1/2"	0.121	0.04717	12.78	100
1002604	90° ELBOW PLAIN/M. THREAD 40-1 1/4"	0.088	0.01553	4.72	50
1002603	90° ELBOW PLAIN/M. THREAD 32-1"	0.045	0.00892	2.45	50





## ITEM 003 | Plain M/T 90° elbow

Código	Axa	Peso (g)	C	D	E	F	PN	ROSCA
02603	32x1"	44	56	22	19	59	PN10	BSP
02604	40x1 1/4"	71	75	26	21	74	PN10	BSP
02605	50x1 1/2"	109	91	31	22	85	PN10	BSP
02606	63x2"	245	109	38	26	109	PN10	BSP



## PRODUCT DOCUMENTS



## PRODUCT CERTIFICATES



## COMPANY CERTIFICATES

